



# NEWSLETTER

## Association des Propriétaires du Lac Papineau

Barb Brehn Langer, Editor

Spring 2021

### President's Message

After a well-deserved winter of rest, the lake is once again offering itself for our nautical activities. A feverishness then takes hold of us because we can't wait to take advantage of it and put our boats in the water. Maybe a few little tricks to fix on our boats and docks and hop to the water!

Hmm... there may be a forgotten detail...: are we in good standing to drive our boat, do we have our Pleasure Craft Operator Card? Do we have all the necessary safety equipment on board?

For the past ten years, Gerry Segal has been reminding us of these wise tips in the newsletter: "Be courteous and carry your driver's card with you because there are going to be patrollers on the lake."

Now this summer we will finally see the presence of patrollers! Indeed, the City of Ste-Agathe has decided to extend the services of the nautical patrol assigned to Lac-des-Sables. In order to ensure greater safety on the lake, we have therefore agreed, along with the Manitou and Ludger Lakes associations, that the patrol conduct tours of our lake. The patrollers are firefighters from the Monts Fire Authority who have undergone boating safety training and have been authorized to issue infringement notices by the Director of Public Prosecutions. Although they have that power, they want to raise awareness of boating safety and good practice. This is not about having a constant presence that might suggest to some that they cannot navigate freely. But we have heard your concerns and this is a response to allow everyone to enjoy the lake safely.

We therefore recommend that you carry your driver's card (and anyone who uses your boat) and ensure that you have the safety equipment required by Transport Canada.

In the same vein, it has been confirmed that the speeds in our Code of Conduct are compliant and enshrined in the Canada Shipping Act. Indeed, it can be seen in the Building Restrictions Regulations... Appendix 6, art. 146 and 147: at Papineau Lake, the maximum speed is 10 km within 23 metres of the shoreline and islands. (And 70 km outside these areas)

**Happy sailing season!**

Robert Brès, President

### CALENDAR OF EVENTS

#### Annual General Meeting

We are looking at various options to keep everyone safe. At this time, we are hoping to have an annual meeting sometime in August. Watch this space!

#### Annual Lake Swim

Sadly, we have been notified by our insurance carrier that the Association/Board may no longer sponsor the lake swim, without having a number of measures in place, including but not limited to qualified (lifeguard-trained) persons in boats accompanying the swimmers and on-site St. Johns Ambulance. However, this does not stop you – the residents – from organizing the swim. Your board will "hold" 10-12am open on the first Saturday of August for YOUR swim and we will provide refreshments at the boat launch as usual. However, your board members will not sponsor or organize the swim. We recommend that you use Facebook to organize yourselves.

#### Member BBQ

With our primary purpose being to keep everyone safe, we will make a decision on the BBQ over the summer, in conjunction with provincial recommendations for outdoor gatherings. Stay tuned.

**Japanese Knotweed** is one of the world's top 100 most invasive species. It has hollow, smooth, purple to green coloured stems up to 2.5cm in diameter. The hollow jointed stems have reddish-brown solid nodes surrounded by a papery sheath. The stems die back each fall and the dead stalks remain standing over the winter. Numerous new stems emerge in the spring. The juvenile stems resemble asparagus spears and are purplish in colour, fading to green as they mature. Japanese Knotweed grows rapidly; stems can grow up to 8 cm per day. The plant can grow 1 m in height in three weeks, with the mature plant reaching full height by the end of July. This plant grows in large bamboo-like clumps, reaching heights of 1-3 m. The roots grow at least double that length underground. **This invasive plant has been identified on at least 1 property on Ch Paiement and it will continue to spread if not addressed.**

(cont'd below)

## Like our newsletter?

**Want to read some back issues, as far back as 1994?**

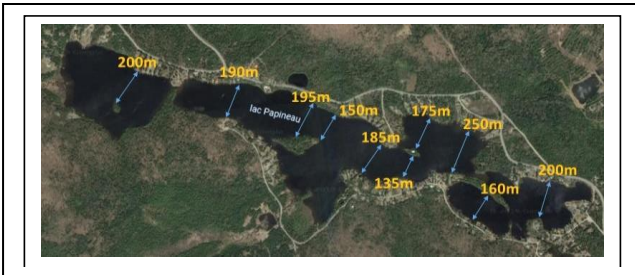
Go to our website at [www.petitlaclong.org](http://www.petitlaclong.org) > select Association > select Newsletters. Happy reading!

## More interesting reading on our website:

Read about What's happening in Sainte-Agathe-des-Monts and Mont Tremblant, Connect with Nautism Québec and learn about basic boating safety, Learn about environmental preservation efforts when you link to Québec's Ministry of Environment and Climate Change, Find your garbage, recycling and large item pickup calendar, Understand the Roles and Responsibilities of your Board, Read the minutes from our last 2 Annual General Meetings (2018, 2019). Our Association's financial reports can also be found on our website, for access by paid members only.

## Did You Know?

Our little lake, affectionately known as Petit Lac Long, is actually very "petit", as you can see from the measurement diagram below. This picture shows the width of our lake at various locations and is also posted on our website. Seeing this, it's easy to understand why large boats and boats with large wakes are so problematic on our lake for swimmers, other boaters and, especially, the shoreline.



**Good bye winter! Chantal Giroux and Desmond Shaffer brave the ice in early April!**



## How to get rid of Japanese Knotweed:

- 1. Cut down and remove the canes.** Japanese knotweed will not regrow from cut canes, so it's important to trim down as many as you can. Use shears to cut off the canes as close to the ground as possible, then remove the cut pieces from your lawn or garden. You may also use an environmentally safe weedkiller.
- 2. Mow the plants down weekly.** If you continually cut the remaining aboveground portions of Japanese knotweed, the plant may weaken and die. To remove remaining or regrowing weeds, mow the plants down as short as possible each week to help kill them off.
- 3. Contact a professional if all else fails.** Japanese knotweed can be quite difficult to remove, so don't get discouraged if your attempts fail to eradicate it completely. Do an Internet search for companies that specialize in removing this stubborn weed and ask them to inspect your property and give you an estimate for removal. Though you'll have to shell out some money, many companies guarantee their work, making it a worthwhile expense.
- 4. Do not dispose of the plant by burying, composting or throwing the cut pieces in your brown bin.** The plant must be burned in a controlled setting (after drying for a week) or gathered in tightly tied bags for the garbage or landfill.

**Here is what the plant looks like:**



## Are drivers going too fast on your road??

Please remember that this is not something that the association has any control over. You must contact the police/town yourself. Multiple complaints are the only ways to have the police take note.

If you want to make a complaint, you can call:

Sûreté du Québec- Sainte-Agathe-des-Monts detachment:  
Sgt. Sasseville 819-326-3131 ext. 3131

**Don't forget to check out our website!**

[www.petitlaclong.org](http://www.petitlaclong.org)

## **ARE YOU MOVING???**

## **HAVE YOU CHANGED YOUR EMAIL ADDRESS??**

Don't forget to update the association with changes to your email address, or if you move away from Lac Papineau, so we can update your contact information.



## **Pet Owners – please take note!**

It may not be the city but people still don't appreciate picking up after someone else's animals!

Keep your dogs on leash when walking, to prevent any mishaps. We continue to have complaints about dogs, particularly on Chemin Paiement, knocking walkers over and leaving dog messes behind. One resident was injured when she was knocked over on Chemin Paiement.

## **PLANNING ON GOING FISHING???**

Even though the bounty on musky has been discontinued, you may still catch one. Please **DO NOT RELEASE** back into the lake. The musky are a predatory fish and have depleted our trout stocks in the lake. If we ever want to stock the lake with trout again, as we did for many years before the musky became too prevalent, we must reduce the musky population!

## **It is very important to clean your boats and trailers before putting them in the water.**

The Eurasian watermilfoil (*Myriophyllum*) is an extremely invasive plant and is on our doorstep. Lakes nearby are affected: Lake Quenouille, Lake Ludger and Trout Lake. This contamination affects the fauna of the lake... and property values. You can go to the Wash Stations of Lac-des-Sables or Ludger or do it yourself with a pressure washer or brush and products containing bleach, vinegar or chlorine (1 part for 9 parts water).

Please watch: [Invasive exotic species : 5 steps to protect your lake - YouTube](#)

## **Know your board**

President:	Robert Brès
Vice President	Jean-Claude Lecompte
Treasurer	Daniel Zours
Secretary/Editor	Barb Brehn Langer
Membership Director	Tom Brehn
Technical Director	Adam Finkelstein

## **Why the change to delivering membership payments, you ask?**

Over the past 2 years, our residents have had the ability to hand deliver payments to board members. Unfortunately, that has now changed. We had residents showing up as early as 7am, as late as 9pm, during meals, interrupting family and personal time, not to mention making the board members concerned about their own safety and that of their families, during COVID-19 lockdowns.

We all volunteer our time but that comes with a caveat: we still want to enjoy our time on our beautiful lake without constant interruption.

We are still investigating the option of eTransfer directly to the association; however, at this time, we are unable to do so. For these reasons, we prefer cheque payments.

We trust that everyone will understand the reason for the change.

**Many thanks to Mathieu Huppé and Hugues Raymond for their translation assistance. Without the help of these volunteers, we couldn't issue this newsletter!**

Everyone on your Board volunteers their time but we can't do it alone! We really appreciate the help we are given by volunteers around the lake.

## **Do you have a new neighbour?**

Please tell them about our association and how to get in touch with us. We will provide them with a Welcome Package, containing the most recent issue of our newsletter, our Code of Conduct, information on our board and more!

## **Membership Reminder**

Please remember that 1 property = 1 membership fee. We have residents who own multiple homes around the lake, some of which are used for rentals. Each and every property needs to pay the membership fee, since renters are also using the lake and surrounding area.

**REMINDER:** Bulky item pickup dates for 2021 are May 17 and July 5 only.

**Please DO NOT leave your bulky items on the roadside.** If you miss the pickup, please take them to the EcoCentre. Keep our roads clear of trash - your neighbours will thank you!